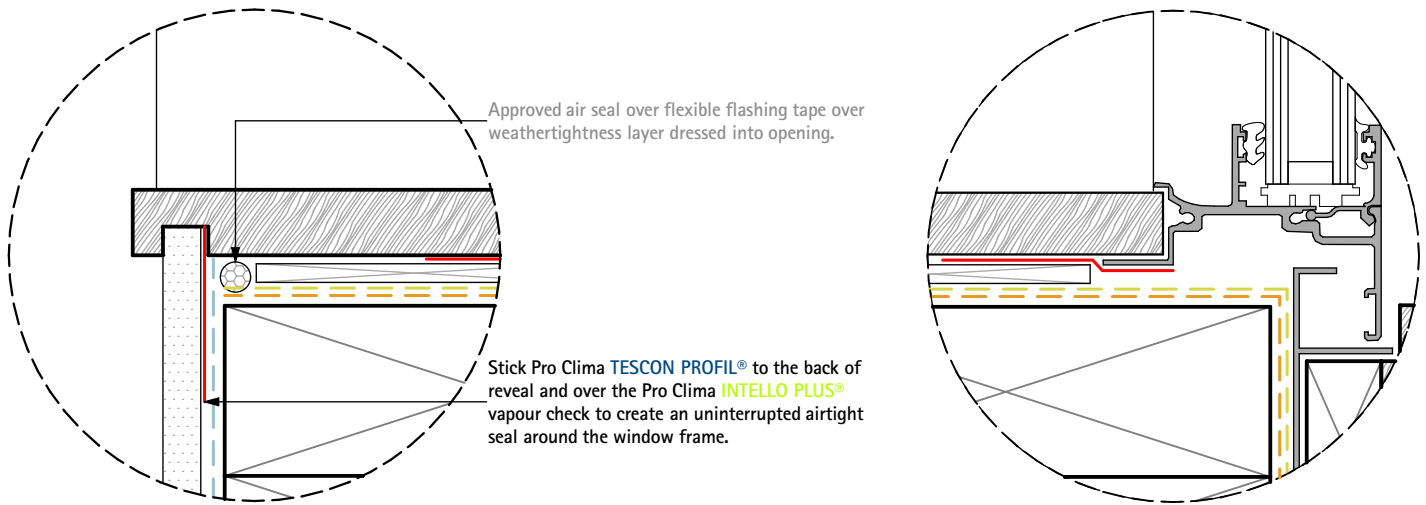


A4222 Pro Clima Door / Window Joinery Aluminium Jamb Detail

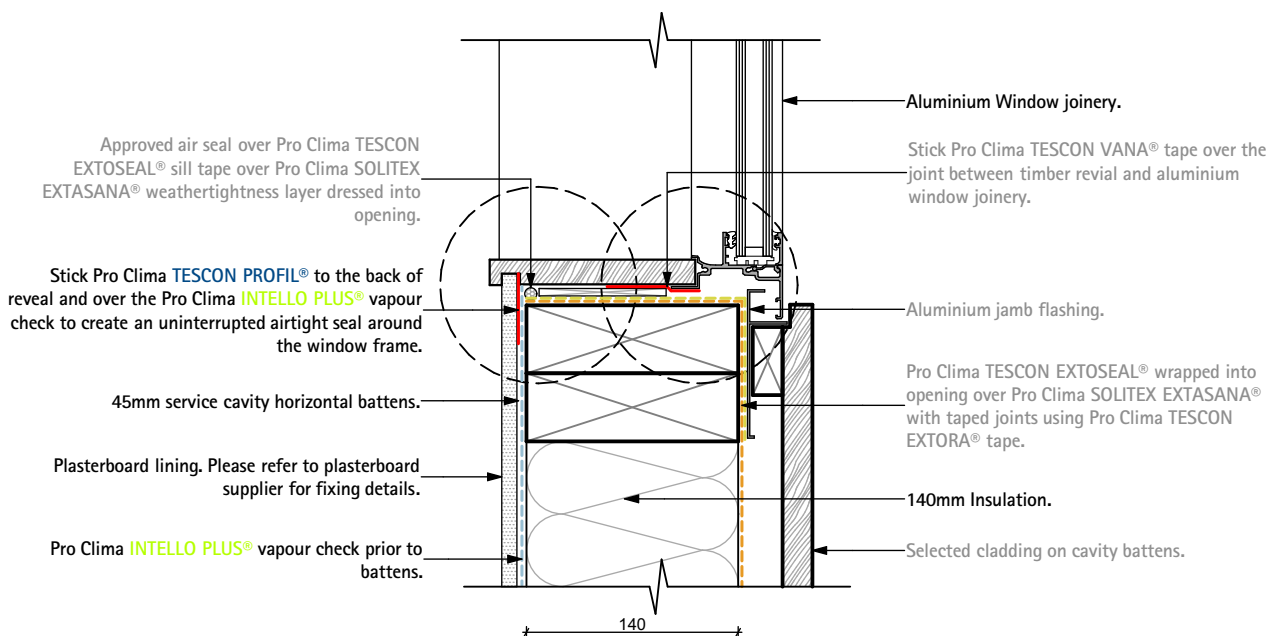
Typical vertical 140mm wall - Window jamb detail, Direct fixing



Approved air seal over flexible flashing tape over weathertightness layer dressed into opening.

Stick Pro Clima **TESCON PROFIL**® to the back of reveal and over the Pro Clima **INTELLO PLUS**® vapour check to create an uninterrupted airtight seal around the window frame.

Please have a look at our WINDOW-DOOR REVEAL DETAIL ID No.: 4001



Approved air seal over Pro Clima TESCON EXTASEAL® sill tape over Pro Clima SOLITEX EXTASANA® weathertightness layer dressed into opening.

Stick Pro Clima **TESCON PROFIL**® to the back of reveal and over the Pro Clima **INTELLO PLUS**® vapour check to create an uninterrupted airtight seal around the window frame.

45mm service cavity horizontal battens.

Plasterboard lining. Please refer to plasterboard supplier for fixing details.

Pro Clima **INTELLO PLUS**® vapour check prior to battens.

Aluminium Window joinery.

Stick Pro Clima TESCON VANA® tape over the joint between timber reveal and aluminium window joinery.

Aluminium jamb flashing.

Pro Clima TESCON EXTASEAL® wrapped into opening over Pro Clima SOLITEX EXTASANA® with taped joints using Pro Clima TESCON EXTORA® tape.

140mm Insulation.

Selected cladding on cavity battens.

140



Pro Clima NZ Limited

Freephone: 0800 PRO CLIMA (776 254)
PO Box 925 CBD

Phone: 04 589 8460
Fax: 04 589 8461

Wellington 6140

Email: support@proclima.co.nz
Web: www.proclima.co.nz

Title:

Door / Window Joinery Aluminium Jamb Detail

Scale: 1:2, 1:5
Revision: D
Issued: 06-03-2019

Detail
Number:

A4222